

# THE ESSENTIAL

GLASS FOR FAÇADE

**SAINT-GOBAIN HONG KONG & MACAU**

March 2025

We are the worldwide leader in light and sustainable construction



**160,000**  
employees



**76**  
countries



**46.5**  
In euro billion / 2024 sales



**360**  
years of innovation

Worldwide leader in light and sustainable construction, Saint-Gobain designs, manufactures and distributes materials and services for the construction and industrial markets. Its integrated solutions for the [renovation](#) of public and private buildings, [light construction](#) and the [decarbonization of construction and industry](#) are developed through a continuous innovation process and provide sustainability and performance.



# MAKING THE WORLD A BETTER HOME

Locally in Hong Kong, Saint-Gobain offers a wide range of construction products such as Weber mortars, Gyproc gypsum building products, Isover insulation, Saint-Gobain building glass, SageGlass, adhesives & sealants, Weber / Chryso / GCP / Fosroc construction chemicals (including cement additives, concrete admixtures, and specialty building materials), PAM piping, Vetrotech, Abrasives, High Performance Plastics, etc.

Saint-Gobain is the largest mortar manufacturer with factory in Hong Kong & Southern China and has a strong positioning across Asia.



We are committed to contributing to net zero emissions by 2050



# SUSTAINABLE CONSTRUCTION BY SAINT-GOBAIN GLASS

**In everything we do at Saint-Gobain Glass, we are guided by the engaging purpose of the Saint-Gobain Group: Making the World a Better Home.**

Our mission is to facilitate the shift towards sustainable construction by offering solutions that prioritize both sustainability and performance. This means that we strive to deliver innovation, design and cost-efficiency through better buildings, reduced environmental impacts and improved indoor conditions for the health and well-being of occupants.

We understand that sustainable construction is not just about the process but also how the building will be used.

For this purpose, we provide our customers with innovative solutions that support their journey towards sustainability, and we advocate for better policies, standards, and practices within the construction market.

## BETTER FOR THE PLANET

Reduced building-related environmental footprint



### ENERGY AND CARBON

■ **Reduced embodied carbon emissions:** The construction industry contributed 37% of global carbon emissions in 2021, including the embodied carbon part that can be released over a building's life cycle. As new buildings become more energy efficient, the importance of reducing embodied carbon emissions grows. This is why we launched in 2022 the first low-carbon glass on the market, ORAÉ®.

We assess the environmental impact of our glass solutions and ensure transparent communication by publishing Environmental Product Declarations (EPD). Thanks to our glazing configurator Calumen®, it is now possible to estimate the carbon footprint of any kind of glazing.

■ **Increased energy efficiency:** We are recognized as an innovative company and we developed for decades magnetron coated glass to improve the energy performance of buildings, whatever the climatic zone. Applying coatings on our glass has a low CO<sub>2</sub> impact compared to its benefits.

■ **Increased use of renewable energy:** Once the energy need has been reduced to the minimum, the remaining need can be supplied with renewable and decarbonized sources, locally produced if possible. And what if this source of energy was the façade? This is today possible with Building Integrated Photovoltaic (BIPV) solutions.



### RESOURCES AND CIRCULARITY

■ **Reduced use of non renewable resources :** The construction industry currently represents a 40% share of global raw material consumption<sup>12</sup>. As a result, it has a big role to play in improving how we use resources efficiently. Our objective is to increase the incorporation of cullet, or recycled glass fragments, in the manufacturing of our float glass to 40% by the year 2030.

■ **Reduced amount of non-recovered construction and demolition waste:** The construction sector is a major contributor to solid waste in the world, it is responsible for 40% of solid waste streams<sup>13</sup>. At Saint-Gobain Glass, we promote recycling of cullet from external sources, which we then use again in our furnaces.

<sup>12</sup> Global Alliance for Buildings and Construction, Global Status Reports 2017  
<sup>13</sup> World Health Organization, Combined or Multiple Exposure to Health Stressors in Indoor Built Environments (2014)

## BETTER FOR PEOPLE

Enhanced health and wellbeing



### HEALTH AND WELL-BEING INDOORS

■ **Better thermal comfort:** A balanced thermal environment is essential to feel comfortable. Within our approach for sustainable construction, buildings must keep the ideal indoor temperature all year long. We apply on our glass a thin transparent coating acting as an invisible thermal shield, they capture the sun heat to keep it outside, for a better thermal comfort.

■ **Better visual comfort:** Natural light is crucial for an optimal sense of well-being. We continuously innovate to bring a maximum of daylight inside buildings while keeping the insulation performances of our glazings. Natural light contributes positively on mood, productivity and sleep quality.

■ **Better acoustics:** We are more productive, happier and experience fewer health issues in environments where sounds are well-balanced. Our acoustic glazing improves the sound insulation of a building. It brings calm inside.

■ **Improved indoor air quality:** We spend more than 90% of our time inside buildings. The fresher the air we breathe, the healthier we are in the indoor spaces in which we live or work. In line with our health policy and our aim to mainstream sustainability in innovation, we strive to phase out from our products' portfolio toxic substances.

For more transparency, we published 7 content declarations that offer detailed information on the make-up of our products. In addition, our glazing products do not emit any volatile organic compound, (VOC) as glass is an inert material.



DISCOVER MORE  
ON OUR SUSTAINABLE  
CONSTRUCTION WEBPAGE



# LOW EMBODIED CARBON GLASS

## ORAÉ®

The highly selective solar control products of the COOL-LITE® XTREME and SKN families are available on ORAÉ® substrate, the world's first low-carbon glass.

**COOL-LITE® XTREME ORAÉ®**  
**COOL-LITE® SKN ORAÉ®**



With ORAÉ®, Saint-Gobain Glass has achieved a landmark technical breakthrough enabling it to offer a low embodied carbon glass on the façade market thanks to a substantial R&D effort and the excellence of our industrial teams. This innovation will help to significantly reduce the carbon footprint of construction and accelerate the development of the circular economy.

Intended for use in the glazed parts of a facade, COOL-LITE® ORAÉ® is a perfect response to the stricter sustainability requirements of the building industry without any compromise on technical or aesthetic performance.

### SUSTAINABILITY

COOL-LITE® ORAÉ® provides the best of both embodied and operational carbon levels, thanks to:

- The glass substrate ORAÉ®, with its low carbon footprint verified by an Environmental Product Declaration (EPD), produced by combining a very high recycled glass content (cullet) and renewable electricity.
- The excellent energy performances of the COOL-LITE® XTREME or COOL-LITE® SKN coatings, which already drastically reduce carbon emissions generated by energy consumption, when using the building thanks to its high performance in terms of daylight intake, solar control and thermal insulation.

### PERFORMANCES

COOL-LITE® XTREME ORAÉ® and COOL-LITE® SKN ORAÉ® provide the **same performances and quality** as respectively COOL-LITE® XTREME or COOL-LITE® SKN on PLANICLEAR®, with a much lower carbon footprint.



According to its verified EPD, the ORAÉ® substrate has a **carbon footprint of only 6.64 kg CO<sub>2</sub> eq./m<sup>2</sup>** (for a 4mm substrate), bringing a **reduction of 42%** compared to our European standard product PLANICLEAR®.

Coated, processed and assembled in insulated glazing unit, the reduction is then around 30% to 40%.



GET TO KNOW MORE ON OUR ORAÉ® WEBPAGE



CHECK OUR EPD OF ORAÉ® AND COATED ORAÉ® IN SEVERAL THICKNESSES



CHECK OUR C2C CERTIFICATION FOR ORAÉ®

# BIRD PROTECTION

## 4BIRD®

With 4BIRD®, Saint-Gobain Glass offers a full range of solutions to answer the growing demands of bird friendly glass and glazing.

Gathering several possibilities to combine Saint-Gobain Glass COOL-LITE® solar control coated glass with certified pattern made using different processing technologies, 4BIRD® offers both a sustainable solution for the preservation of the biodiversity and a wiser energy consumption of building<sup>14</sup>, while keeping a homogeneous and neutral external aesthetic for the entire façade.



Following existing guidelines and expert's recommendations, 4BIRD® offers several configurations and approved designs. The different proposed configurations were evaluated by the American Bird Conservancy (ABC) and found that they satisfied ABC's criterion for bird-friendly glass (Material Threat Factor (TF) ≤ 25).

4BIRD® are turnkey solutions to help our customers to answer to projects where bird protection is needed, while having the same aesthetics and performances for the entire building. There are variety of possibilities to answer to all projects and visions.



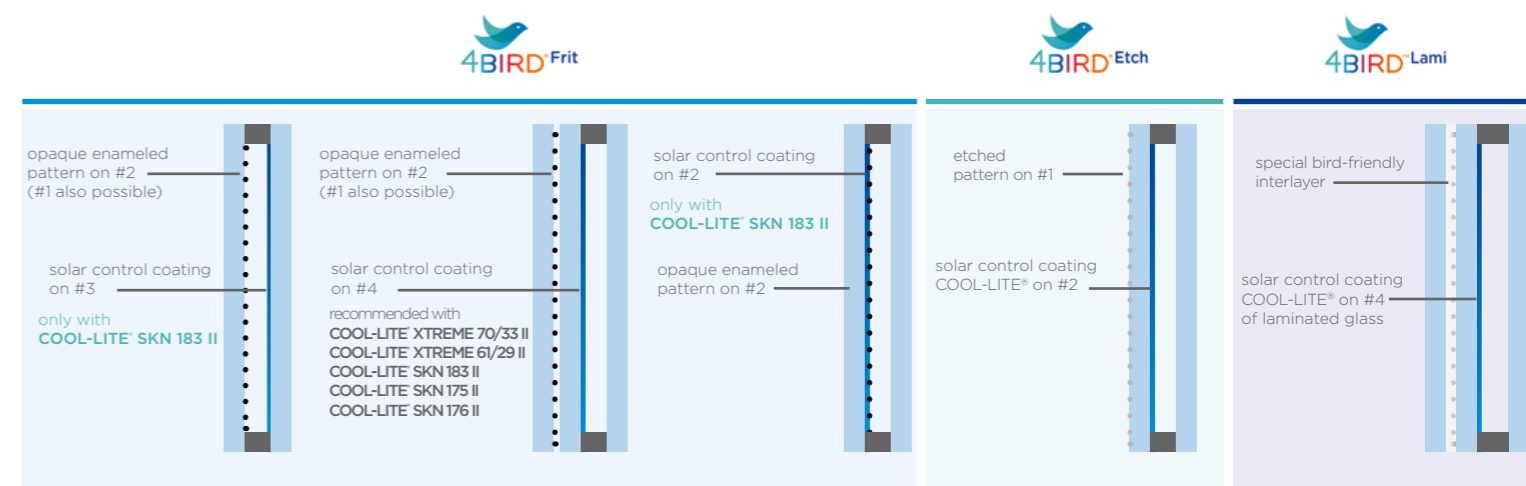
4BIRD®Frit offers several possibilities to combine an opaque enameled pattern together with selected COOL-LITE® solar control coatings of Saint-Gobain Glass in different configurations.



4BIRD®Etch features an etched pattern directly on face #1 together with selected COOL-LITE® solar control coatings on face #2 of the same glass pane. Several designs can be etched on the glass surface.



4BIRD®Lami ensures the possibility to combine commercially available bird-friendly interlayers with Saint-Gobain Glass solar control coatings of the COOL-LITE® family for an effective protection.



<sup>14</sup> All products of the 4BIRD® family are comprising Saint-Gobain Glass' COOL-LITE® XTREME and SKN solar control coated glass, offering thus all benefits related to this product family



MORE DETAILS IN OUR DEDICATED 4BIRD® DOCUMENTATION

# SUSTAINABLE SOLUTIONS FOR ENERGY GENERATION

## BUILDING INTEGRATED PHOTOVOLTAICS (BIPV)

**At Saint-Gobain we want to help our customers to decarbonize their activities. This is why we offer, with specific partners, Building Integrated Photovoltaics (BIPV) solutions, turning the façade to a source of energy.**

BIPV panels are designed solar modules that replace conventional façade coverings and are integrated in the building skin. More than just traditional covering, they deliver renewable energy to the building.

Solar façades are one of the cleverest ways to reduce the environmental impact of a building. BIPV helps designers to comply with building codes that specify the maximum primary energy consumption of the building or even the amount of renewable energy to be generated on-site by the building.

Furthermore, BIPV for vertical façades and pitched roofs are generating financial earnings by reducing the electricity need from the grid, as well as revenues by selling excess electricity to the grid.



### From translucent to fully colored for several uses on the building

BIPV panels are most widely used to cover non-transparent parts of the façade (e.g. spandrels areas). Thanks to the latest technologies it is today possible to have modules combining high efficiency and appealing aesthetics, with a large range of colors and textures that can meet any design requirement of the architect. The module integrates perfectly into the façade and the solar technology becomes invisible.

Moreover, solar modules with translucent cell spacing, can be used in skylights, in vertical façade, or open structure, also in double or triple glazing units, letting light coming in.

More than for the façade (as insulated glazing units, curtain wall or ventilated façade), BIPV panels can turn any part of a building into an active energy producing part, such as rooftop, balcony railings or canopies...

### Countless design for an easy integration in all projects

BIPV is a “construction material” that adapt to all designs by offering:

- Countless colors, in several tones and intensities
- Various glass structures and finishes
- Numerous geometries with a large range of sizes and shapes possible

### A profitable investment turning the façade to a source of energy

Solar building envelope made with BIPV turns passive building into an energy producing solar skin which is amortized within few years, before becoming profitable power plants.

Our offer being based on specific partnerships with BIPV manufacturers depending on the country, please contact us for individual inquiries.

# CIRCULAR ECONOMY

## RECYCLING

**Global resource consumption is expected to double by 2060<sup>15</sup> as the global economy is rapidly expanding, resulting insignificant environmental impacts and resources shortage. Addressing the issue of scarce resources is necessary to reduce the extraction and use of virgin raw materials.**

**At Saint-Gobain Glass, we put circularity at the heart of our activities. We doubled the recycled content in our products since 2011 and we commit to increase the percentage of cullet (scraps of glass) used in the production of our float glass to 40% by 2030.**

Glass, known for its durability, has the incredible quality of being completely recyclable, and it can be recycled endlessly, without any compromise in its mechanical or chemical attributes.

Incorporating more cullet into our glass production yields to significant environmental benefits:

- 700 kg CO<sub>2</sub>eq. (scopes 1, 2, and 3) per ton of cullet.
- and preserving at the same time 1.2 tons of natural resources.

At Saint-Gobain Glass, we aim to increase cullet coming from external sources. Buildings approaching the end of their lifespan should be viewed as a valuable resource of materials. We achieved a remarkable fivefold increase in the amount of cullet from end-of-life glazing used in our products by 2023.

We have a deep knowledge on what can be considered as cullet, and for any demolition or renovation project, Saint-Gobain Glass is here to offer you consistent support built on experience gained through over 10 years of implemented recycling initiatives.

### Saint-Gobain Glass Recycling

We established a network of partners, called Saint-Gobain Glass Recycling, in 5 countries including France, and Germany, with others working on implementing similar networks committed to recycling of end-of-life glazing.

The recycled glass generated at our partners' sites is used afterwards in the manufacturing of new glass production at our float lines.

<sup>15</sup> 1 OECD: Global Material Resources Outlook to 2060, Economic Drivers and Environmental Consequence



PIRAEUS TOWER

@Nikos Daniilidis /Cgi  
Konstantinos Koudounis



GATE:01 FRÖSUNDAVIC

@Lasse Olsson  
Foto

### Fully recycled façade, we closed the loop

The Piraeus Tower in Greece is a landmark building coming back to life after more than 40 years of emptiness. In 2022, 125 tons of end-of-life glass were collected from the tower, then treated and recycled as external cullet in the furnace of the Saint-Gobain Glass float plant in Calarasi, Romania. The new façade has been refurbished with new glazing units composed of the high-performance solar control glass COOL-LITE® XTREME 70/33 II.

35 years ago, Norwegian architect Niels Torp designed the headquarters of airline SAS in the north of Stockholm. During the recent refurbishment of the huge complex, the glazing had to be completely replaced to meet today's requirements for thermal and visual comfort. In line with circular economy, more than 40 tons of glass from the old façade were collected and processed into cullet. It was then recycled into the furnace of the Saint-Gobain Glass float plant in Torgau, Germany.

For these projects, Saint-Gobain Glass has been a leader in recovery and recycling of post-consumer cullet in its glazings by establishing successful partnerships networks.



LEARN MORE ABOUT  
OUR RECYCLING  
INITIATIVES

# OUR PRODUCT AND SERVICE OFFER FOR FAÇADES

We play our part in designing some of the world's most iconic architectural projects, offering a wide range of innovative glazing solutions for façades. Partners such as visionary architects or contractors striving to deliver the ultimate building envelope have helped establish Saint-Gobain Glass as a key glazing supplier to the global construction industry.

Saint-Gobain offers a complete range of energy efficient coated glass; we answer the needs with an adapted offer in Europe and in the different regions of the world, thanks to innovation and the technology developed by Saint-Gobain Glass, to serve comfort and well-being for sustainable construction.

We also offer tailor-made advisory about glass products and technical solutions. Our local sales and specification team can help in choosing the best solutions for your project. In complete transparency, to find a suitable glazing for your project, Saint-Gobain Glass also provides several digital resources and tools, helping to determine the optimal glazing based on its performance values, aesthetic, or carbon footprint, and to compare different solutions. On demand, we also offer virtual rendering of coated glass and physico-realistic image of different glazing products for your own building façade.

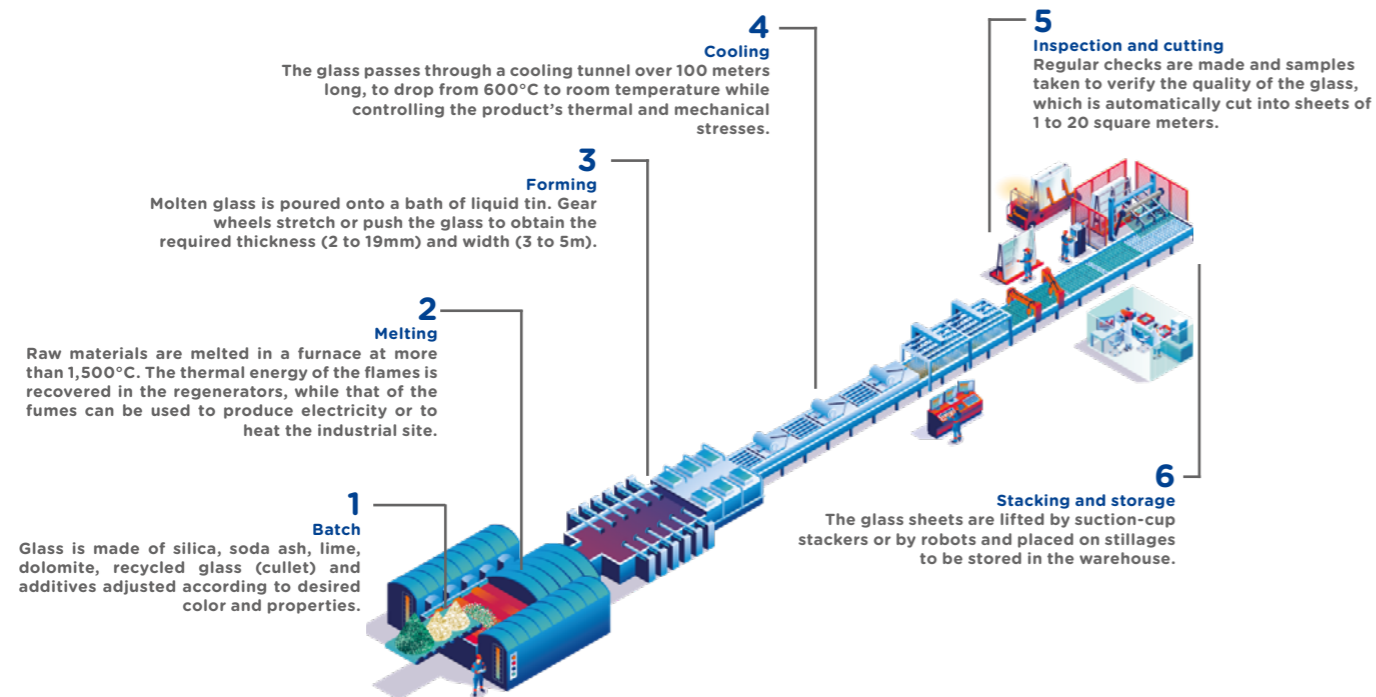
GLASS SUBSTRATE

## Transparency: clear and extra-clear glass - PLANICLEAR® and DIAMANT®

PLANICLEAR® high quality clear glass and DIAMANT® highly transparent extra-clear glass provide extreme transparency and ensure more daylight in.

## Low embodied carbon glass - ORAÉ®

First low-carbon glass on the market with exceptionally low carbon footprint, produced by combining high recycled glass content and renewable energy.



FLAT GLASS MANUFACTURING  
AT SAINT-GOBAIN GLASS

SERVICES FOR COATED GLASS

## Easy processing - EASYPRO®

Revolutionary and unique temporary surface protection for to-be-tempered coatings. Developed for the ease of processing, EASYPRO® offers flexibility and productivity and reduces environmental impact.

## Think big - OVERLENGTH

Large scale range of raw glass and coated glass panes up to 18 x 3,21 m.

COATED GLASS

## Solar Control Glass - COOL-LITE®

Solar control coatings reduce overheating within buildings while letting the daylight in. Offering homogeneous aesthetic for large facade, they help to reduce energy needs, hence operational carbon emissions.

## Low-E glass - PLANITHERM® and ECLAZ®

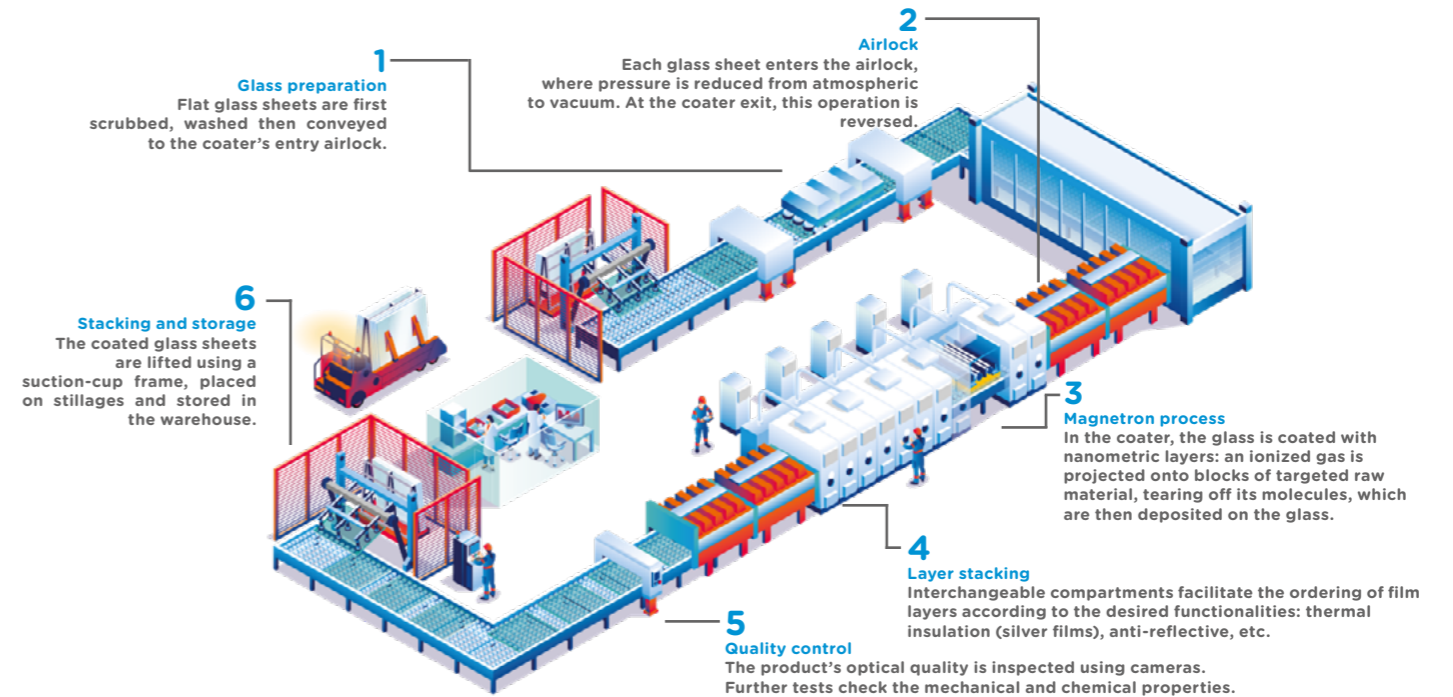
In complementarity to solar control glass in double or triple glazing, Low-E glass significantly reduce heat loss to the exterior, saving the energy need for internal heating.

## Easy maintenance - BIOCLEAN®

BIOCLEAN® reduces the required cleaning frequency of glazing, and also reduces the occurrence of external condensation.

## Anti-reflective glass - VISION-LITE®

Anti-reflective glass is a key asset, especially for shop front projects or sightseeing windows, where reflections on glass must not block the visibility of products.



COATED GLASS MANUFACTURING  
AT SAINT-GOBAIN GLASS

Pages  
14 to 19

Pages  
24-25

Pages  
24-25

Pages  
24-25

Page  
26

Page  
27

**Low embodied carbon glass - ORAÉ®**

First low-carbon glass on the market with exceptionally low carbon footprint, produced by combining high recycled glass content and renewable energy.

**Bird protection - 4BIRD®**

Solutions to combine COOL-LITE® solar control glass and visible pattern by birds to help protecting wildlife.

**Solutions for energy generation - Building Integrated Photovoltaics (BIPV)**

Building Integrated Photovoltaics (BIPV) solutions, turning the façade into a source of energy and help our customers to decarbonize their activities.

**Circular economy - RECYCLING**

Support for recycling of old façade and on-site collection of end-of-life glass, treatment and recycling as external cullet in our furnace.

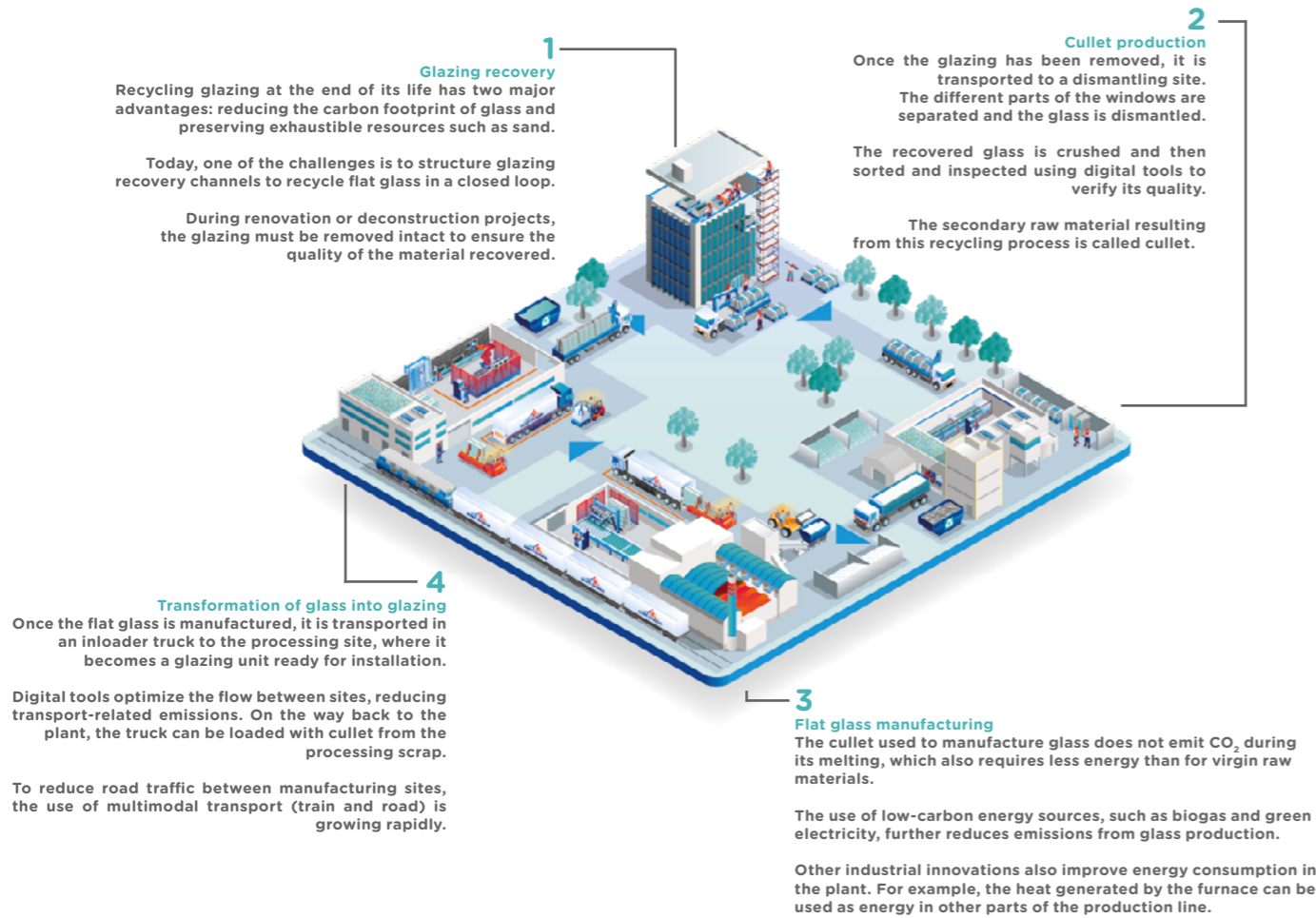
Page 6

Page 7

Page 8

Page 9

LOW CARBON MANUFACTURING OF FLAT GLASS AT SAINT-GOBAIN GLASS



Page 28

Page 28

Page 30

Page 31

**Online glazing configurator - Calumen®**

All-in-One glazing configurator designed for all building professionals, to determine performances of glazing and find the suitable glazing for projects.

**Aesthetic rendering - GlassPro**

Accurate predictive glass façade physico-realistic rendering to choose and compare two types of glazing or to appreciate the look of Saint-Gobain Glass products on your own building.

**Safety glass solutions - VETROTECH**

Glazed solutions for the safety of people and property: fire protection, attack, bullet and blast resistance.

**Dynamic glass - SageGlass®**

Electrochromic glass that tints and clears to optimize daylight, energy efficiency and comfort, while preventing heat and glare without the need for blinds or shades.

OUR COATED GLASS FOR FACADES

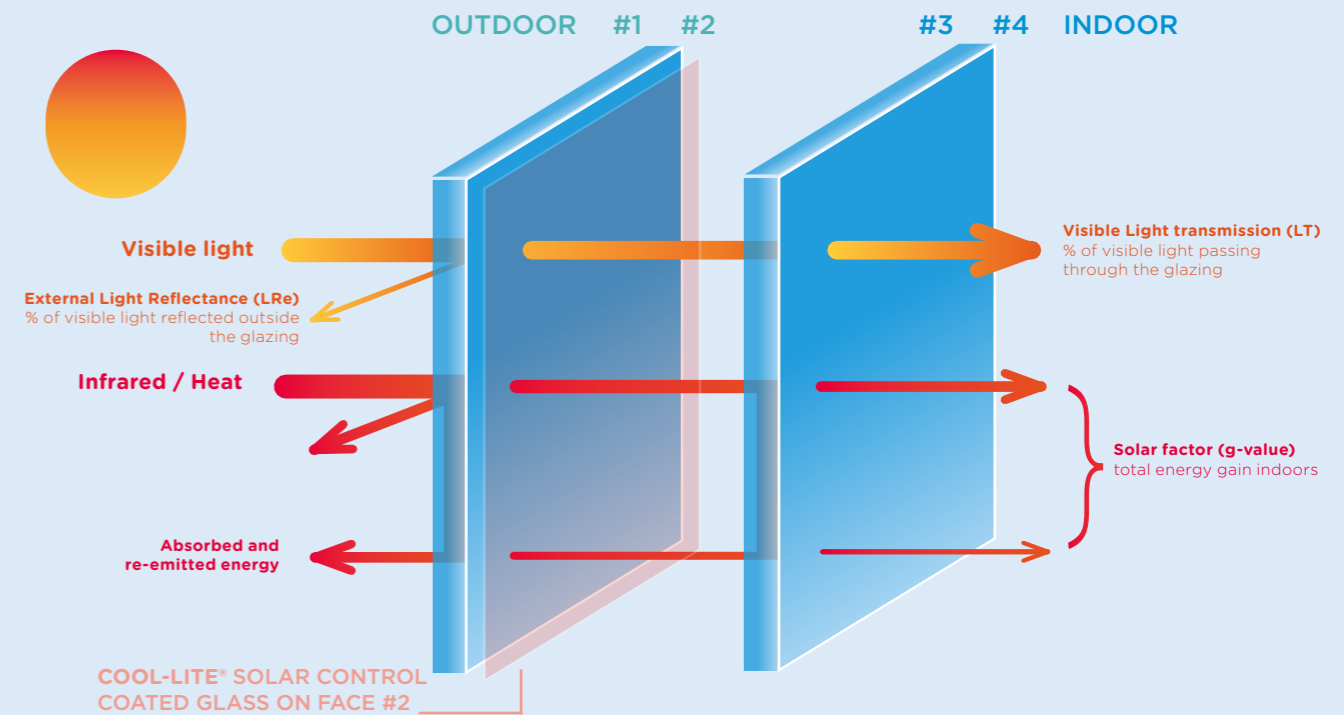
Saint-Gobain Glass offers a complete range of energy efficient coated glass. With solar control, low emissivity, low maintenance and transparency, our glass meets the requirements of low energy consumption buildings.

COOL-LITE® are Saint-Gobain Glass Solar control glass; Assembled in insulating glazing units (IGU), they help reducing overheating within buildings while letting the daylight in. Offering homogeneous aesthetic for large facade, they help to reduce energy needs, hence operational carbon emissions.

The technology behind solar control and low emissivity is a thin transparent coating of metallic oxides, deposited on one or two glass panes of a double or triple glazing unit.

Invisible thermal shield, this coating retains the heat inside the building and captures the sun heat to keep it outside.

KEY PERFORMANCE FACTORS IN INSULATING GLAZING UNIT



**Light transmission (LT):** Percentage of visible light directly transmitted through the glass.



**Reflection outside (LRe):** Percentage of visible light directly reflected from the exterior glass surface.



**Reflection inside (LRi):** Percentage of visible light directly reflected from the interior glass surface.



**Ug-value:** Measure of the heat loss through the glass due to the difference of temperature between inside and outside. The lower the Ug-value is, the better the insulating properties are. Expressed in W/m<sup>2</sup>K.



**Solar Factor (g-value):** Percentage of solar energy transmitted through the glass. It measures the ability of a glazing to reduce the heating of the room. The lower the solar factor is, the better it helps to improve the comfort inside of the building.



**Shading Coefficient (SC):** Ratio of the solar factor of a glazing unit to the solar factor of a clear float glass of nominal thickness of 3 mm (0.87). The lower the shading coefficient number, the less heat gain and thus more shading is provided.



**Selectivity (LSG):** Ratio between the glass' light transmission and solar factor. When the selectivity of the glass is higher than 2, it gives you twice as much visible light versus heat.

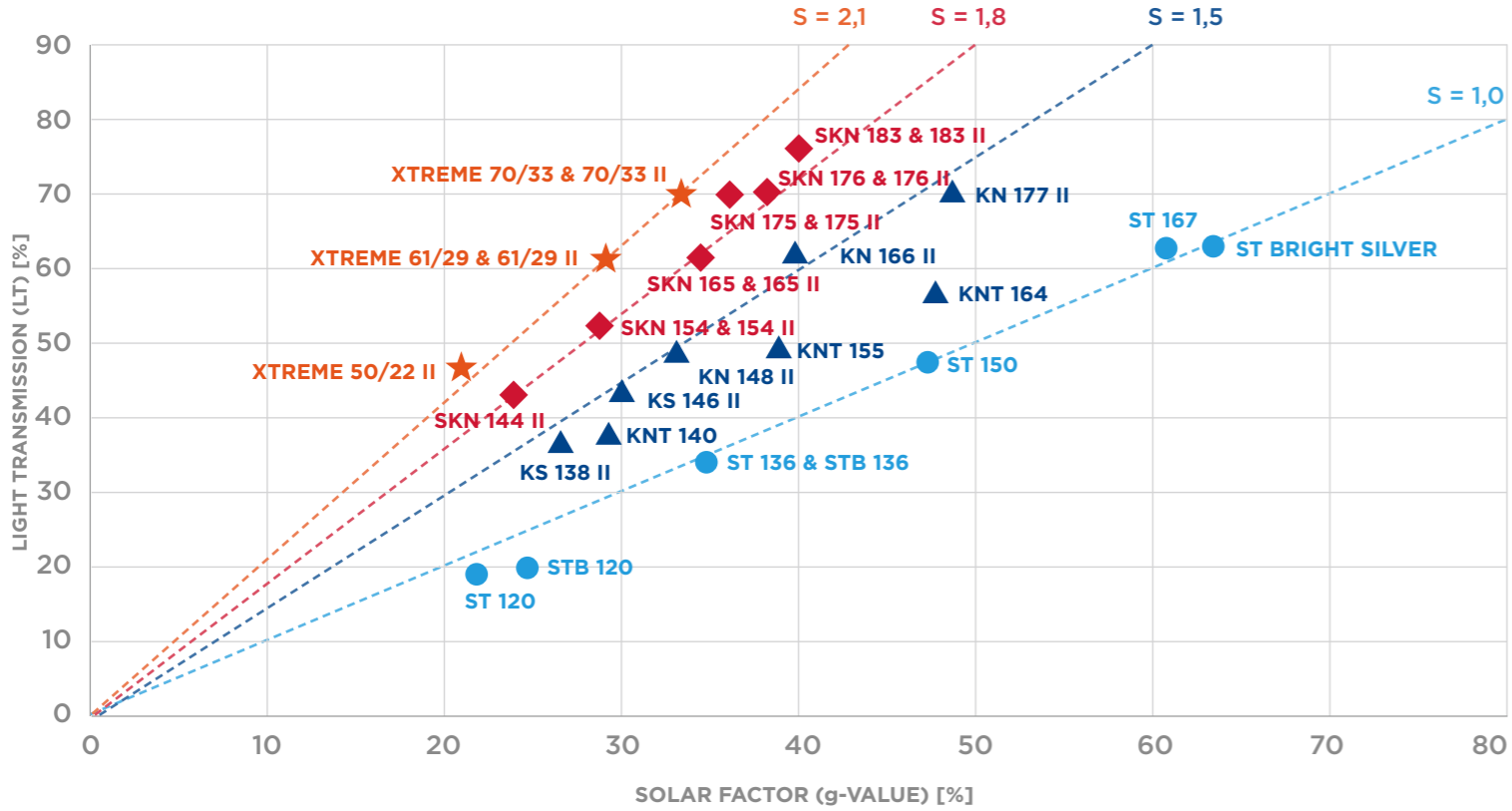


**Sound reduction (Rw):** The weighted sound reduction index (Rw) is a rating to measure and indicate how effective a soundproofing material or system is. This rating is expressed in decibels.



**Carbon footprint (GWP):** The Global Warming Potential corresponds to the whole amount of greenhouse gases (GHG) emitted directly and indirectly and is usually measured in equivalent kilograms of CO<sub>2</sub> per m<sup>2</sup> of glass.

# SOLAR CONTROL GLASS COOL-LITE®



- ★ COOL-LITE® XTREME
- ◆ COOL-LITE® SKN
- ▲ COOL-LITE® K
- COOL-LITE® ST

**EXTREMELY SELECTIVE SOLAR CONTROL GLASS WITH HIGHLY NEUTRAL AESTHETICS**

**HIGHLY SELECTIVE SOLAR CONTROL GLASS WITH NEUTRAL AESTHETICS**

**SELECTIVE SOLAR CONTROL GLASS WITH NEUTRAL TO SILVER AESTHETICS**

**DURABLE SOLAR CONTROL GLASS WITH FULL FLEXIBILITY FOR PROCESSING**

Status 10/2024  
All values according to EN 410 for standard configuration 6/16/4mm with COOL-LITE® coating on face #2, all panes PLANICLEAR®

## HOW TO READ OUR COOL-LITE® PRODUCT NAMES

**COOL-LITE® XTREME** Extremely selective solar control coatings (triple silver) with reinforced thermal insulation

COOL-LITE® **XTREME** **70** / **33** **II**

**FAMILY:** Extremely selective solar control coatings (triple silver)

**LIGHT TRANSMISSION** in double glass unit 6|16|4 mm

**SOLAR FACTOR (g-value)** in double glass unit 6|16|4 mm

**PROCESSING** II = to-be-tempered  
∅ = annealed

**COOL-LITE® SKN** Highly selective solar control coatings (double silver) with reinforced thermal insulation  
**COOL-LITE® K** Selective solar control coatings (single silver) with good to reinforced thermal insulation  
**COOL-LITE® ST** Solar control coatings offering full flexibility for processing

COOL-LITE® **SK** **N** **1** **83** **II**

**FAMILY:**  
S = selective  
K = K-value (Ug-Value / low-E performance)

**COLOR IN REFLECTION**  
B = blue  
G = golden / grey  
N = neutral  
S = silver

**SUBSTRATE**  
0 = DIAMANT®  
1 = PLANICLEAR®  
2 = PARSOL® Bronze  
3 = PARSOL® Grey  
4 = PARSOL® Green  
7 = PARSOL® Sapphire Blue

**LIGHT TRANSMISSION** for 6mm monolithic glass

**PROCESSING**  
T = temperable  
L = to-be-laminated

**PROCESSING** II = to-be-tempered  
∅ = annealed

SELECTIVITY INSULATION INSULATED GLAZING UNIT MONOLITHIC GLASS HOMOGENEITY OF FACADE AESTHETIC LOW-CARBON GLASS EASYPRO® OVERLENGTH (up to 18m) MATCHING SPANDRELS PROPOSITIONS BIRD-FRIENDLY SOLUTIONS VERSATILITY ENAMELING BENDING

Product	Description	Tempering	Performance	Usage	Specialties	Processing
COOL-LITE® XTREME PREMIUM	EXTREMELY SELECTIVE SOLAR CONTROL GLASS WITH HIGHLY NEUTRAL AESTHETICS	annealed and to-be-tempered versions with comparable performances and aesthetics	****	*** #2	***	ORAG standard ✓ ✓ ✓ ✓ ✓
COOL-LITE® SKN BEST	HIGHLY SELECTIVE SOLAR CONTROL GLASS WITH NEUTRAL AESTHETICS	annealed and to-be-tempered versions with comparable performances and aesthetics	***	*** #2 #3 (SKN 183 II)	***	ORAG standard ✓ ✓ ✓ ✓ ✓ SKN 183 II SKN 183 II
COOL-LITE® K II & KNT STANDARD	SELECTIVE SOLAR CONTROL GLASS WITH NEUTRAL TO SILVER AESTHETICS	to-be-tempered or one stock products	**	**(*) #2	***	for KN II ✓
COOL-LITE® ST FLEXIBILITY	DURABLE SOLAR CONTROL GLASS WITH FULL FLEXIBILITY FOR PROCESSING	temperable products	*	* #2 #2	***	✓ ✓
PLANITHERM® & ECLAZ® COMPLEMENTARITY	HIGHLY TRANSPARENT LOW-E GLASS WITH NEUTRAL AESTHETICS	annealed and to-be-tempered versions	**(*)	#3 #5 (TGU)	*	ORAG on demand for PLANITHERM® II ✓ ✓ ✓

## FACADE

Average performance of glass based on EN Standards for double glazing configuration of 6mm performance glass-12mm air gap- 6mm Clear glass with coating on surface #2 and for the single glazing 6mm with coating on surface #2

<sup>1</sup> DGU values calculated with Clear Substrate as inner pane, except for extra clear appearance for which low-iron DIAMANT is used. Saint-Gobain Glass Glass reserves the right to change product performance features without notice or obligation. The performance values shown are nominal and subject to variations due to manufacturing tolerances. <sup>2</sup> Validation should be taken with digital printing inks and enamels. <sup>3</sup> Refers to the processing guidances of each product for more details about the processing conditions or contact the local Technical Support Manager.

Glazing 6-12-6/6	Glass	Generation	Product Name	Shade	Light Transmission %	Solar factor	Shading Co-efficient	External reflection %	Internal reflection %	U-Value (W/sq.m.K)	Weight (kg/m2)	Rw (C, Ctr)	GREEN CERTIFICATIONS		
													GRIHA	EPD	Green Pro
Single Glazing	ET 125	sgg Evo	Clear Cosmos	Neutral	28	0.29	0.34	28	9	3.8	15	32(-1,-2)	Yes	Yes	No
Double Glazing	ET 125	sgg Evo	Clear Cosmos	Neutral	25	0.23	0.27	29	15	2	30	33(-1,-4)	Yes	Yes	No
Single Glazing	ET 135	sgg Evo Plus	Evo Plus Clear	Neutral	34	0.34	0.39	23	8	3.9	15	32(-1,-2)	Yes	Yes	Yes
Double Glazing	ET 135	sgg Evo Plus	Evo Plus Clear	Neutral	31	0.28	0.32	24	14	2.1	30	33(-1,-4)	Yes	Yes	Yes
Single Glazing	ET 150	sgg Evolite	Evolite Clear	Neutral	50	0.5	0.58	13	11	5	15	32(-1,-2)	Yes	Yes	Yes
Double Glazing	ET 150	sgg Evolite	Evolite Clear	Neutral	45	0.42	0.48	15	17	2.6	30	33(-1,-4)	Yes	Yes	Yes
Double Glazing	KNT 148 II	sgg Nano	BluDE	Neutral	46	0.3	0.35	31	24	1.9	30	33(-1,-4)	Yes	Yes	Yes
Double Glazing	KS 130	sgg Nano Silver	Platina	Neutral	30	0.22	0.25	43	19	1.6	30	33(-1,-4)	Yes	Yes	Yes
Double Glazing	KS 138	sgg Nano Silver	Shine	Neutral	36	0.26	0.3	38	20	1.6	30	33(-1,-4)	Yes	Yes	Yes
Double Glazing	KS 146	sgg Nano Silver	Chroma	Neutral	42	0.29	0.34	33	19	1.6	30	33(-1,-4)	Yes	Yes	Yes
Double Glazing	KT 125	sgg Nano	Harmony Clear	Neutral	24	0.21	0.24	23	16	1.7	30	33(-1,-4)	Yes	Yes	No
Double Glazing	KT 130	sgg Nano	Nano Zephyr	Neutral	31	0.25	0.29	22	14	1.8	30	33(-1,-4)	Yes	Yes	Yes
Double Glazing	KT 140	sgg Nano	Icy Menthol	Neutral	37	0.29	0.33	23	12	1.8	30	33(-1,-4)	Yes	Yes	Yes
Double Glazing	KT 155	sgg Nano	Moonshine	Neutral	47	0.38	0.43	17	11	1.9	30	33(-1,-4)	Yes	Yes	Yes
Double Glazing	KT 164	sgg Nano	Winter Mist	Neutral	57	0.47	0.54	14	10	1.9	30	33(-1,-4)	Yes	Yes	Yes
Double Glazing	PLTT	sgg Planitherm	Pristine White	Neutral	75	0.57	0.66	12	12	1.8	30	33(-1,-4)	Yes	Yes	No
Single Glazing	SCN 145	sgg Horizon	Horizon Clear	Neutral	45	0.44	0.51	22	4	4.9	15	32(-1,-2)	Yes	Yes	Yes
Double Glazing	SCN 145	sgg Horizon	Horizon Clear	Neutral	40	0.37	0.42	24	12	2.5	30	33(-1,-4)	Yes	Yes	Yes
Double Glazing	SKN 133	sgg Envision	Equinox Clear	Neutral	30	0.2	0.23	13	10	1.6	30	33(-1,-4)	Yes	Yes	Yes
Double Glazing	SKN 144	sgg Envision	Iris	Neutral	41	0.24	0.27	20	15	1.6	30	33(-1,-4)	Yes	Yes	Yes
Double Glazing	SKN 146	sgg Envision	Quartz	Neutral	40	0.25	0.29	11	11	1.6	30	33(-1,-4)	Yes	Yes	Yes
Double Glazing	SKN 154	sgg Envision	Magma	Neutral	51	0.28	0.33	18	22	1.5	30	33(-1,-4)	Yes	Yes	Yes
Double Glazing	SKN 165	sgg Envision	Lumina	Neutral	60	0.34	0.39	16	18	1.5	30	33(-1,-4)	Yes	Yes	Yes
Double Glazing	SKN 176	sgg Envision Plus	Alpha	Neutral	69	0.37	0.43	13	15	1.5	30	33(-1,-4)	Yes	Yes	Yes
Single Glazing	ST 108	sgg Cool-lite	Platinum	Neutral	9	0.14	0.16	43	34	3.6	15	32(-1,-2)	Yes	Yes	No
Double Glazing	ST 108	sgg Cool-lite	Platinum	Neutral	8	0.1	0.11	43	36	1.9	30	33(-1,-4)	Yes	Yes	No
Single Glazing	ST 120	sgg Cool-lite	Sterling silver	Neutral	20	0.29	0.33	32	27	5.2	15	32(-1,-2)	Yes	Yes	No
Double Glazing	ST 120	sgg Cool-lite	Sterling silver	Neutral	18	0.21	0.25	32	30	2.6	30	33(-1,-4)	Yes	Yes	No
Single Glazing	ST 136	sgg Cool-lite	Graphite	Neutral	37	0.43	0.5	22	18	5.5	15	32(-1,-2)	Yes	Yes	No
Double Glazing	ST 136	sgg Cool-lite	Graphite	Neutral	34	0.35	0.4	23	23	2.7	30	33(-1,-4)	Yes	Yes	No
Single Glazing	ST 150	sgg Cool-lite	Dew Drop	Neutral	51	0.56	0.64	18	17	5.6	15	32(-1,-2)	Yes	Yes	No
Double Glazing	ST 150	sgg Cool-lite	Dew Drop	Neutral	46	0.47	0.54	20	22	2.8	30	33(-1,-4)	Yes	Yes	No
Single Glazing	ST 167	sgg Antelio Plus	Sparkling Ice	Neutral	67	0.68	0.78	19	19	5.6	15	32(-1,-2)	Yes	Yes	No
Double Glazing	ST 167	sgg Antelio Plus	Sparkling Ice	Neutral	60	0.6	0.68	22	23	2.8	30	33(-1,-4)	Yes	Yes	No
Single Glazing	SCN 125	sgg Privasee	Privasee Clear	Neutral	29	0.31	0.36	35	6	4.8	15	32(-1,-2)	Yes	Yes	No
Double Glazing	SCN 125	sgg Privasee	Privasee Clear	Neutral	26	0.25	0.28	36	13	2.5	30	33(-1,-4)	Yes	Yes	No
Single Glazing	ET 151 II	sgg Evolite	Evolite NU	Neutral	51	0.43	0.50	13	9	4.3	15	32(-1,-2)	Yes	Yes	Yes
Double Glazing	KG 122	sgg Aurum	Aurum Gold	Gold	22	0.22	0.25	23	34	1.6	30	33(-1,-4)	Yes	Yes	No
Single Glazing	STG 127	sgg Midas Gold	Midas Gold	Gold	27	0.33	0.38	27	10	5	15	32(-1,-2)	Yes	Yes	No
Double Glazing	STG 127	sgg Midas Gold	Midas Gold	Gold	24	0.26	0.3	28	16	2.6	30	33(-1,-4)	Yes	Yes	No
Single Glazing	STR 130	sgg Rosa	Rosa Gold	Rose Gold	31	0.44	0.51	10	33	4.9	15	32(-1,-2)	Yes	Yes	No
Double Glazing	STR 130	sgg Rosa	Rosa Gold	Rose Gold	28	0.36	0.41	11	36	2.5	30	33(-1,-4)	Yes	Yes	No
Double Glazing	KN Bronze	sgg Bronze	Zen Bronze	Bronze	27	0.22	0.25	19	17	1.6	30	33(-1,-4)	Yes	Yes	Yes
Single Glazing	STC 135	sgg Kopper	Kopper NG	Copper	35	0.46	0.53	10.5	28.5	5.16	15	32(-1,-2)	Yes	Yes	No
Single Glazing	STC 135 II	sgg Kopper	Kopper NG	Copper	38	0.47	0.54	10	25	5.17	15	32(-1,-2)	Yes	Yes	No
Single Glazing	ET 725	sgg Evo	Orion Blue	Blue	18	0.23	0.27	14	9	3.8	15	32(-1,-2)	Yes	Yes	No
Double Glazing	ET 725	sgg Evo	Orion Blue	Blue	16	0.16	0.19	14	15	2	30	33(-1,-4)	Yes	Yes	No
Single Glazing	ET 735	sgg Evo Plus	Evo Plus Blue	Blue	21	0.26	0.29	12	7	3.9	15	32(-1,-2)	Yes	Yes	No
Double Glazing	ET 735	sgg Evo Plus	Evo Plus Blue	Blue	19	0.19	0.21	12	14	2.1	30	33(-1,-4)	Yes	Yes	No
Single Glazing	ET 750	sgg Evolite	Evolite Blue	Blue	32	0.36	0.42	8	10	5	15	32(-1,-2)	Yes	Yes	No
Double Glazing	ET 750	sgg Evolite	Evolite Blue	Blue	29	0.27	0.31	9	16	2.6	30	33(-1,-4)	Yes	Yes	Yes
Double Glazing	KS 730	sgg Nano Silver	Sky	Blue	19	0.16	0.18	20	19	1.6	30	33(-1,-4)	Yes	Yes	No
Double Glazing	KT 725	sgg Nano	Harmony Blue	Blue	15	0.15	0.17	12	16	1.7	30	33(-1,-4)	Yes	Yes	No
Single Glazing	SCN 745	sgg Horizon	Horizon Blue	Blue	29	0.33	0.39	12	4	4.9	15	32(-1,-2)	Yes	Yes	No
Double Glazing	SCN 745	sgg Horizon	Horizon Blue	Blue	26	0.25	0.28	12	11	2.5	30	33(-1,-4)	Yes	Yes	No
Double Glazing	SKN 776	sgg Envision Plus	Nova	Blue	44	0.26	0.3	8	13	1.5	30	33(-1,-4)	Yes	Yes	Yes

Average performance of glass based on EN Standards for double glazing configuration of 6mm performance glass-12mm air gap- 6mm Clear glass with coating on surface #2 and for the single glazing 6mm with coating on surface #2

<sup>1</sup> DGU values calculated with Clear Substrate as inner pane, except for extra clear appearance for which low-iron DIAMANT is used. Saint-Gobain Glass Glass reserves the right to change product performance features without notice or obligation. The performance values shown are nominal and subject to variations due to manufacturing tolerances. <sup>2</sup> Validation should be taken with digital printing inks and enamels. <sup>3</sup> Refers to the processing guidances of each product for more details about the processing conditions or contact the local Technical Support Manager.

Glazing 6-12-6/6	Glass	Generation	Product Name	Shade	Light Transmission %	Solar factor	Shading Co-efficient	External reflection %	Internal reflection %	U-Value (W/sq.m.K)	Weight (kg/m2)	Rw( C, Ctr)	GREEN CERTIFICATIONS		
													GRIHA	EPD	Green Pro
Single Glazing	ST 708	sgg Cool-lite	Blue Isle	Blue	6	0.15	0.18	20	34	3.6	15	32(-1,-2)	Yes	Yes	No
Double Glazing	ST 708	sgg Cool-lite	Blue Isle	Blue	5	0.09	0.11	20	36	1.9	30	33(-1,-4)	Yes	Yes	No
Single Glazing	ST 720	sgg Cool-lite	Tranquil Blue	Blue	13	0.26	0.3	16	27	5.2	15	32(-1,-2)	Yes	Yes	No
Double Glazing	ST 720	sgg Cool-lite	Tranquil Blue	Blue	12	0.17	0.19	16	30	2.6	30	33(-1,-4)	Yes	Yes	No
Single Glazing	ST 736	sgg Cool-lite	Blue breeze	Blue	23	0.34	0.39	12	18	5.5	15	32(-1,-2)	Yes	Yes	No
Double Glazing	ST 736	sgg Cool-lite	Blue breeze	Blue	21	0.24	0.27	12	22	2.7	30	33(-1,-4)	Yes	Yes	No
Single Glazing	ST 750	sgg Cool-lite	Royal Blue	Blue	32	0.4	0.46	10	16	5.6	15	32(-1,-2)	Yes	Yes	No
Double Glazing	ST 750	sgg Cool-lite	Royal Blue	Blue	29	0.29	0.34	11	21	2.8	30	33(-1,-4)	Yes	Yes	Yes
Single Glazing	ST 767	sgg Antelio Plus	Blue Ray	Blue	42	0.46	0.52	10	18	5.6	15	32(-1,-2)	Yes	Yes	No
Double Glazing	ST 767	sgg Antelio Plus	Blue Ray	Blue	38	0.36	0.41	12	22	2.8	30	33(-1,-4)	Yes	Yes	Yes
Single Glazing	STB 120	sgg Cool-lite	Titanium Blue	Blue	22	0.32	0.37	21	29	5.2	15	32(-1,-2)	Yes	Yes	No
Double Glazing	KBT 130	sgg Nano Blue	Blue Frost	Blue	25	0.22	0.25	21	22	1.7	30	33(-1,-4)	Yes	Yes	No
Double Glazing	KBT 140	sgg Nano Blue	Oxy Blue	Blue	36	0.3	0.35	24	17	1.8	30	33(-1,-4)	Yes	Yes	Yes
Double Glazing	KS 738	sgg Nano Silver	Ultra Marine	Blue	23	0.18	0.21	18	20	1.6	30	33(-1,-4)	Yes	Yes	No
Double Glazing	KS 746	sgg Nano Silver	Lagoon	Blue	27	0.2	0.23	16	19	1.6	30	33(-1,-4)	Yes	Yes	Yes
Double Glazing	KT 740	sgg Nano	Twilight Blue	Blue	24	0.2	0.22	12	12	1.8	30	33(-1,-4)	Yes	Yes	No
Double Glazing	KT 755	sgg Nano	Misty Blue	Blue	30	0.24	0.28	10	10	1.9	30	33(-1,-4)	Yes	Yes	Yes
Double Glazing	KT 764	sgg Nano	Blue Horizon	Blue	36	0.29	0.33	8	9	1.9	30	33(-1,-4)	Yes	Yes	Yes
Double Glazing	PLT TB	sgg Planitherm	Satin Blue	Blue	48	0.35	0.4	7	11	1.8	30	33(-1,-4)	Yes	Yes	Yes
Double Glazing	SKN 744	sgg Envision	Lumosa	Blue	26	0.18	0.21	11	14	1.6	30	33(-1,-4)	Yes	Yes	No
Double Glazing	SKN 754	sgg Envision	Quasar	Blue	33	0.21	0.24	10	21	1.5	30	33(-1,-4)	Yes	Yes	Yes
Double Glazing	SKN 765	sgg Envision	Stellar	Blue	38	0.24	0.27	9	17	1.5	30	33(-1,-4)	Yes	Yes	Yes
Double Glazing	STB 120	sgg Cool-lite	Titanium Blue	Blue	20	0.24	0.27	21	32	2.7	30	33(-1,-4)	Yes	Yes	No
Double Glazing	KBT 440	sgg Wave	Wave	Blue Green	30	0.22	0.25	18	16	1.8	30	33(-1,-4)	Yes	Yes	Yes
Single Glazing	SCN 725	sgg Privasee	Privasee Blue	Blue	18	0.27	0.31	17	6	4.8	15	32(-1,-2)	Yes	Yes	No
Double Glazing	SCN 725	sgg Privasee	Privasee Blue	Blue	16	0.18	0.21	17	13	2.5	30	33(-1,-4)	Yes	Yes	No
Single Glazing	ET 751 II	sgg Evolite	Evolite NU	Blue	33	0.32	0.37	8	8	4.3	15	32(-1,-2)	Yes	Yes	Yes
Single Glazing	ET 425	sgg Evo	Green Aura	Green	23	0.25	0.28	21	9	3.8	15	32(-1,-2)	Yes	Yes	No
Double Glazing	ET 425	sgg Evo	Green Aura	Green	21	0.18	0.21	21	15	2	30	33(-1,-4)	Yes	Yes	No
Single Glazing	ET 435	sgg Evo Plus	Evo Plus Green	Green	28	0.27	0.32	17	7	3.9	15	32(-1,-2)	Yes	Yes	Yes
Double Glazing	ET 435	sgg Evo Plus	Evo Plus Green	Green	25	0.21	0.24	18	14	2.1	30	33(-1,-4)	Yes	Yes	No
Single Glazing	ET 450	sgg Evolite	Evolite Green	Green	41	0.39	0.45	10	11	5	15	32(-1,-2)	Yes	Yes	Yes
Double Glazing	ET 450	sgg Evolite	Evolite Green	Green	37	0.3	0.34	12	17	2.6	30	33(-1,-4)	Yes	Yes	Yes
Double Glazing	KS 430	sgg Nano Silver	Zenith	Green	25	0.18	0.2	31	19	1.6	30	33(-1,-4)	Yes	Yes	No
Double Glazing	KS 438	sgg Nano Silver	Echo	Green	30	0.2	0.23	28	20	1.6	30	33(-1,-4)	Yes	Yes	Yes
Double Glazing	KS 446	sgg Nano Silver	Celeste	Green	35	0.23	0.26	24	19	1.6	30	33(-1,-4)	Yes	Yes	Yes
Double Glazing	KT 425	sgg Nano	Harmony Green	Green	20	0.16	0.19	17	16	1.7	30	33(-1,-4)	Yes	Yes	No
Double Glazing	KT 440	sgg Nano	Tropica Green	Green	31	0.22	0.25	17	12	1.8	30	33(-1,-4)	Yes	Yes	Yes
Double Glazing	KT 455	sgg Nano	Olive	Green	39	0.27	0.31	13	10	1.9	30	33(-1,-4)	Yes	Yes	Yes
Double Glazing	KT 464	sgg Nano	Citron Frost	Green	47	0.33	0.37	11	10	1.9	30	33(-1,-4)	Yes	Yes	Yes
Double Glazing	PLT TG	sgg Planitherm	Mint Green	Green	62	0.4	0.46	9	11	1.8	30	33(-1,-4)	Yes	Yes	Yes
Single Glazing	SCN 445	sgg Horizon	Horizon Green	Green	37	0.36	0.41	17	4	4.9	15	32(-1,-2)	Yes	Yes	Yes
Double Glazing	SCN 445	sgg Horizon	Horizon Green	Green	34	0.27	0.31	18	11	2.5	30	33(-1,-4)	Yes	Yes	Yes
Double Glazing	SKN 444	sgg Envision	Futura	Green	34	0.2	0.23	15	14	1.6	30	33(-1,-4)	Yes	Yes	Yes
Double Glazing	SKN 454	sgg Envision	Nebula	Green	42	0.24	0.27	14	22	1.5	30	33(-1,-4)	Yes	Yes	Yes
Double Glazing	SKN 465	sgg Envision	Supernova	Green	49	0.27	0.32	13	18	1.5	30	33(-1,-4)	Yes	Yes	Yes
Double Glazing	SKN 476	sgg Envision Plus	Aurora	Green	57	0.3	0.35	10	14	1.5	30	33(-1,-4)	Yes	Yes	Yes
Single Glazing	ST 408	sgg Cool-lite	Deep Green	Green	7	0.15	0.18	31	34	3.6	15	32(-1,-2)	Yes	Yes	No
Double Glazing	ST 408	sgg Cool-lite	Deep Green	Green	7	0.09	0.11	31	36	1.9	30	33(-1,-4)	Yes	Yes	No
Single Glazing	ST 420	sgg Cool-lite	Aquamarine	Green	17	0.27	0.31	23	27	5.2	15	32(-1,-2)	Yes	Yes	No
Double Glazing	ST 420	sgg Cool-lite	Aquamarine	Green	15	0.18	0.2	24	30	2.6	30	33(-1,-4)	Yes	Yes	No
Single Glazing	ST 436	sgg Cool-lite	Turquoise	Green	31	0.35	0.41	17	18	5.5	15	32(-1,-2)	Yes	Yes	No
Double Glazing	ST 436	sgg Cool-lite	Turquoise	Green	28	0.26	0.3	17	22	2.7	30	33(-1,-4)	Yes	Yes	Yes
Single Glazing	ST 450	sgg Cool-lite	Blue Green	Green	42	0.43	0.49	14	17	5.6	15	32(-1,-2)	Yes	Yes	No
Double Glazing	ST 450	sgg Cool-lite	Blue Green	Green	38	0.33	0.37	15	22	2.8	30	33(-1,-4)	Yes	Yes	Yes
Single Glazing	ST 467	sgg Antelio Plus	Emerald Glaze	Green	55	0.5	0.57	14	18	5.6	15	32(-1,-2)	Yes	Yes	Yes
Double Glazing	ST 467	sgg Antelio Plus	Emerald Glaze	Green	50	0.4	0.46	17	23	2.8	30	33(-1,-4)	Yes	Yes	Yes
Single Glazing	SCN 425	sgg Privasee	Privasee Green	Green	24	0.28	0.32	25	6	4.8	15	32(-1,-2)	Yes	Yes	No
Double Glazing	SCN 425	sgg Privasee	Privasee Green	Green	22	0.2	0.23	26	13	2.5	30	33(-1,-4)	Yes	Yes	No
Single Glazing	ET 451 II	sgg Evolite	Evolite NU	Green	42	0.35	0.4	10	9	4.3	15	32(-1,-2)	Yes	Yes	Yes





Easy maintenance coating: **BIOCLEAN®**

Coating	to-be-tempered	annealed	Description	DGU 6   16   4 mm						TGU 6   12   4   12   4 mm with PLANITHERM® XN on face #5							
				Light transmission LT <sup>1</sup>	Solar factor g-value <sup>1</sup>	Selectivity LT / g	External reflection LRe <sup>1</sup>	Internal reflection LRI <sup>1</sup>	Carbon footprint <sup>7,8</sup>	Ug-value <sup>2</sup>	Light transmission LT <sup>1</sup>	Solar factor g-value <sup>1</sup>	Selectivity LT / g	External reflection LRe <sup>1</sup>	Internal reflection LRI <sup>1</sup>	Carbon footprint <sup>7,8</sup>	Ug-value <sup>2</sup>
				[%]	[%]		[%]	[%]	[kg CO <sub>2</sub> eq/m <sup>2</sup> ]	[W/m <sup>2</sup> K]	[%]	[%]		[%]	[%]	[kg CO <sub>2</sub> eq/m <sup>2</sup> ]	[W/m <sup>2</sup> K]

**BIOCLEAN®** in insulated glazing unit, 90% Argon, on PLANICLEAR®

Values given according to the standards EN 410 and EN 673

BIOCLEAN® II	•	to-be-tempered BIOCLEAN® II on face #1	<b>79</b>	<b>76</b>	1.04	<b>18</b>	18	43	2.6	<b>72</b>	<b>57</b>	1.26	20	19	61	1.0
BIOCLEAN®	•	annealed BIOCLEAN® on face #1	<b>77</b>	<b>74</b>	1.04	<b>17</b>	17	39	2.6	<b>70</b>	<b>55</b>	1.27	20	19	57	1.0
BIOCLEAN® SKN 183	•	Bi-coating: BIOCLEAN® on face #1 and COOL-LITE® SKN 183 on face #2	<b>70</b>	<b>38</b>	1.84	<b>15</b>	15	40	1.0	<b>63</b>	<b>35</b>	1.80	17	17	58	0.7
BIOCLEAN® SKN 176	•	Bi-coating: BIOCLEAN® on face #1 and COOL-LITE® SKN 176 on face #2	<b>66</b>	<b>35</b>	1.89	<b>16</b>	17	40	1.0	<b>59</b>	<b>32</b>	1.84	17	19	58	0.7
BIOCLEAN® SKN 165	•	Bi-coating: BIOCLEAN® on face #1 and COOL-LITE® SKN 165 on face #2	<b>57</b>	<b>32</b>	1.78	<b>19</b>	19	40	1.0	<b>52</b>	<b>30</b>	1.73	20	21	58	0.7
BIOCLEAN® SKN 154	•	Bi-coating: BIOCLEAN® on face #1 and COOL-LITE® SKN 154 on face #2	<b>49</b>	<b>26</b>	1.88	<b>21</b>	23	40	1.0	<b>44</b>	<b>24</b>	1.83	22	24	58	0.7

Anti-reflective coating: **VISION-LITE®**

Coating	to-be-tempered	annealed	Description	Light transmission LT <sup>1</sup>	External reflection LRe <sup>1</sup>	Internal reflection LRI <sup>1</sup>
				[%]	[%]	[%]

**VISION-LITE®** as Laminated glass or Monolithic glass on DIAMANT®

Values given according to the standards EN 410 and EN 673

STADIP® VISION-LITE® DIAMANT® (44.2)	•	Coatings on faces #1 and #4 of laminated glass	<b>97</b>	<b>1</b>	1
VISION-LITE® II DIAMANT® (6 mm)	•	Coatings on both sides (#1 & #2) of glass - to be tempered	<b>98</b>	<b>1</b>	1
Semi VISION-LITE® II DIAMANT® (6 mm)	•	Coating on one side of the glass - to be tempered / to be laminated	<b>94</b>	<b>5</b>	5
Semi VISION-LITE® DIAMANT® (6 mm)	•	Coating on one side of the glass - to be laminated	<b>94</b>	<b>5</b>	5

<sup>1</sup> according to EN 410; <sup>2</sup> according to EN 673

<sup>7</sup> Global Warming Potential (GWP A1-A3 Stages) values with PLANICLEAR® and ORAE® are calculations made with Calumen® for each composition of insulated glazing unit (IGU) on the basis of the standard EN 15804+A2. Detailed environmental data are documented in the available Environmental Product Declarations (EPD) of PLANICLEAR® and ORAE®. Only complete EPD can be verified by an external third party.

<sup>8</sup> All panes of the IGU with the same substrate; first pane respectively annealed and/or tempered (II) with the same glass compositions; counter panes always annealed

LOW-E coatings: **PLANITHERM®** and **ECLAZ®**

Complementarity to COOL-LITE® solar control glazing in face #3 and/or #5 of double glazing units (DGU) and triple glazing units (TGU) for optimized performances and increased thermal insulation.

Coating	to-be-tempered	annealed	Description
---------	----------------	----------	-------------

High performance Low-E for insulating glazing units

**ECLAZ®** - latest generation of Saint-Gobain Glass Low-E coatings for high-end glazing units. Produced by a unique industrial technology, ECLAZ® offers high performance and light transmission.

ECLAZ®	•	Perfect for double or triple glazing, mainly in residential and non residential applications. It can reach the value Ug = 0,5 W/(m <sup>2</sup> .K) in TGU.
ECLAZ® II	•	
ECLAZ® ONE	•	Best insulating glass that make possible to get 80% of light transmission. In double glazing, it can reach the value of Ug = 1,0 W/(m <sup>2</sup> .K) into a composition 4-16 argon-4 mm.
ECLAZ® ONE II	•	

Low-E for insulating glazing units

**PLANITHERM®** - PLANITHERM® is the range of high performing low-emissive coated glass for insulating glazing units, ensuring high performance in terms of energy efficiency and daylight.

PLANITHERM® XN	•	Low-emissivity glass that optimizes the energy efficiency of double and triple-glazing units.
PLANITHERM® XN II	•	
PLANITHERM® ONE	•	Mounted in DGU it can reach the Ug-value = 1.0W/(m <sup>2</sup> .K) in a 4-16 argon-4 mm composition



LOOKING FOR OTHER CONFIGURATIONS? GO TO OUR ONLINE GLAZING CONFIGURATOR!





## EASY PROCESSING EASYPRO®

**EASYPRO® is a revolutionary and unique temporary surface protection** developed and offered exclusively by Saint-Gobain Glass. Deposited on to-be-tempered coated glass, it delivers effective protection against mechanical damage as well as ageing, during transport and processing, from deposition of the coating until tempering.

During tempering, EASYPRO® simply burns off without leaving any residue inside or outside the furnace and without any negative impact on the environment or personal health and safety.

### Developed for the ease of processing, EASYPRO® offers flexibility and productivity, it

- reduces surface scratches and remakes
- increases shelf life in stock of after cutting
- eliminates time to unseal the pack
- optimizes tempering cycles
- improves tempering quality

### EASYPRO® is a sustainable innovation, minimizing waste and saving energy, it

- optimizes loading into trucks and thus the carbon footprint of transport
- reduces the amount of packaging and avoid plastic waste
- reduces the scraps and damages and thus the need to produce new glazing
- offers energy saving benefits by allowing reduced temperature levels in the furnace.

### EASYPRO® is an ally for ambitious projects and preserve aesthetic of tempered coated glass, it

- improves the optical quality of heat-treated glass
- helps to deliver optimal aesthetics for most demanding projects (e.g. with impressive overlength glass)

EASYPRO® protects the following to-be-tempered coatings (on PLANICLEAR®, DIAMANT® or ORAÉ®):

- **COOL-LITE® XTREME II and SKN II** (standard with EASYPRO®)
- **COOL-LITE® KN II** (standard with EASYPRO®)
- EASYPRO® is also available on demand on **PLANITHERM® II** glass

Contact us for individual inquiries or coating availability on the different substrates.

## NOW OPTIMIZED FOR AN EVEN EASIER AND SUSTAINABLE PROCESSING



GET TO KNOW MORE  
ON OUR EASYPRO®  
WEBPAGE



## THINK BIG! OVERLENGTH

To answer a major trend in architecture, we think big. Our large-scale range now includes glass panes with dimensions up to:

# 18 x 3.21 m

The benefits are revolutionary:

- greater design possibilities,
- spectacular optical highlights,
- larger evenly shaped facades,
- panoramic views while benefiting from high performance glazing.

Coatings available, on DIAMANT®, PLANICLEAR® or ORAÉ® (in 8, 10 and 12 mm):

- **COOL-LITE® XTREME II**
- **COOL-LITE® SKN II**
- **PLANITHERM® II**

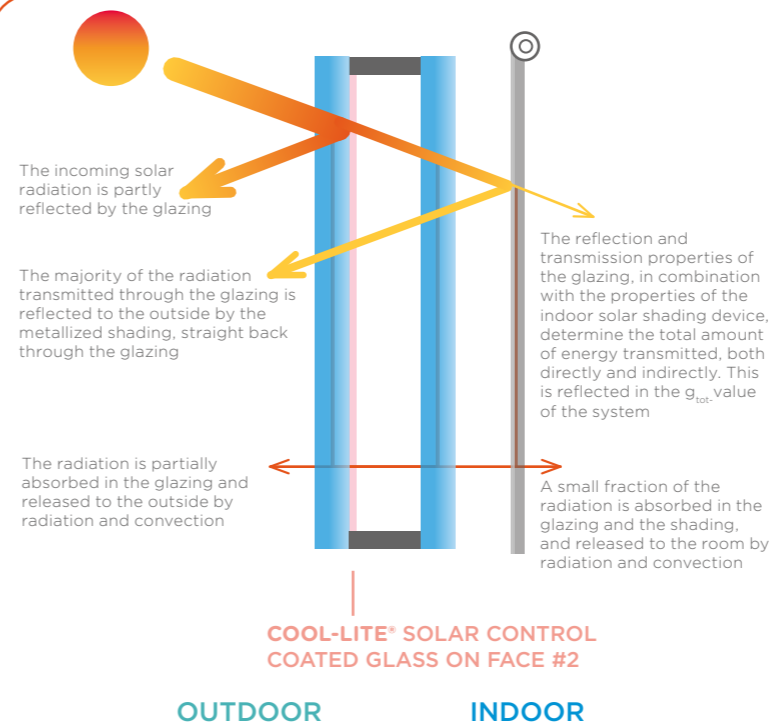
The glass can be heat-treated, laminated, and processed as multifunctional Double Glazed Units (DGU) or Triple Glazed Units (TGU).

Contact us for individual inquiries.



## DYNAMIC FAÇADE COMBINING HIGH PERFORMANCE GLASS AND INTERNAL SHADING

**Highly selective solar control glazings combined with reflective interior roller shades keep out up to 91% of the incoming solar radiation. The solution also manages effectively glare, while providing good visual contact with the outdoors.**



The intelligent combination of solar control glass and metallized interior shading optimizes the  $g_{tot}$ -value, resulting in efficient solar protection while ensuring a pleasant thermal comfort and glare-free indoor environment. This results is a very low  $g_{tot}$ -value of down to 0.09.

Whether you are planning an office building, a school, a museum or an hotel such dynamic façade solution can be a good fit to achieve a good balance between energy, carbon and comfort performance, while being cost-effective.

Contact us for more details.

# OUR DIGITAL TOOLS AND SERVICES

## CALUMEN® - THE REFERENCE CALCULATOR BY SAINT-GOBAIN GLASS



DISCOVER AND TRY CALUMEN ONLINE

**Calumen® is a glazing configurator designed for all building professionals, whatever their level of expertise in glass products: architects, designers, engineering offices, consultants, façade makers, window manufacturers, glass processors and general contractors.**

- Determine the light, energy, thermal or acoustic performances of your glazing
- Find a suitable glazing for your project based on its required performance values
- Personalize settings such as type of glazing, type of coating, glass and cavity thickness
- Get an illustration of the aesthetic of the façade
- Make comparisons between our products to do the best choice
- Save your glazing configuration for further access at any time
- Calculate the carbon footprint of your glazing\*

Designed to make glass specification more efficient, **Calumen® is the perfect tool for finding the right glass for architectural projects of any size.**

Available for worldwide users in 17 languages, Calumen® is accessible at [www.calumen.com](http://www.calumen.com)

\* Carbon footprint values presented are estimations based on the Life Cycle Analysis of our European products (A1-A3). Only complete Environmental Product Declaration can be verified by an external third party. The value is calculated regarding the composition computed based on the standard EN 15804+A2 (2019).

## GlassPro - THE VIRTUAL RENDERING OF GLASS FAÇADE



**The GlassPro APP and GlassPro LIVE are unique services of Saint-Gobain Glass, bringing new perspectives on building design and glazing prototyping through digital simulation. Accurate predictive glass facade physico-realistic rendering reduces the need for physical glass samples, allowing a sustainable approach for prototyping. Furthermore, it speeds up the decision-making process with regards to selecting the ideal glazing for the façade, with the desired aesthetics corresponding to the intention of the architects and designers.**

### GlassPro APP - THE IPAD APPLICATION

GlassPro APP is an application for Apple iPad which enables the user to visualize virtually all Saint-Gobain Glass' standard glazing products.

Choose and compare two types of glazing under a variety of lightning conditions and several interior design settings through two different environments.

This app, [downloadable on the Apple store](#), shows an accurate and realistic virtual rendering, based on physical properties of the glass.

### GlassPro LIVE - THE ON-DEMAND SERVICE

GlassPro Live, Saint-Gobain Glass' on-demand service of glass facade rendering, allows architects to visualize how Saint-Gobain Glass glazing products will appear on their building, as if it were already constructed. This service delivers high-definition "physico-realistic" images under various lighting conditions, including the option to see your configuration on your own building's 3D rendering.

To request the service, please [contact your local sales and specifier team](#).

## WEBSITE SAINT-GOBAIN GLASS



**Find all the information about our products and services on our new website!**

Discover our product range, services, and tools to find the ideal glass for your project which respond the best to your needs.

Find out more about our sustainability approach and our commitments and actions in terms of decarbonisation and circularity.

The new website is also the place to find our latest news, or a quick access to our EPDs and certifications.

[www.saint-gobain-glass.com](http://www.saint-gobain-glass.com)

This website is international, for detailed local offer and dedicated products, you will also find link to our different regions.

## CALUMEN® GALLERY - THE REFERENCE PROJECT WEBSITE FOR GLASS FAÇADES



**Come and explore our architectural references** showing a wide range of glass solutions, innovations and aesthetic options for the building envelope.

**Discover inspirational sustainable design** of living spaces and distinctive buildings that make our environment worth living in

[www.saint-gobain-glass.com/calumen-gallery](http://www.saint-gobain-glass.com/calumen-gallery)



EXPLORE OUR PRODUCT OFFER AND ARCHITECTURAL REFERENCES ON OUR WEBSITE



# SAFETY GLASS SOLUTIONS VETROTECH



## Glass solutions for the protection of people and property

Vetrotech Saint-Gobain designs, produces and markets glazed solutions for the safety of people and property: fire protection, attack, bullet and blast resistance. With its own ballistic and fire resistance testing laboratories, Vetrotech assists and responds to the specific resistance requirements of each project, all while innovating with you.

Saint-Gobain Glass glazing solutions provide aesthetics, design and comfort and can be combined with Vetrotech solutions to offer optimum protection for people and property and thus meet the highest architectural demands.



© Fernando Guerra - Saint-Gobain - New Amsterdam Court House (NL)



### Safety

- Fire protection
- Alarm
- EMS shielding
- Radar interference
- Spy mirror



### Sustainability

- Double or triple glazing
- Solar control
- Self-cleaning



### Comfort

- Acoustic insulation
- Dynamic privacy
- Thermal insulation
- Anti reflection



### Design

- Coloring
- Digital printing
- Screen printing

=



Vetrotech's mastery of tertiary building environments, acquired over more than 40 years of experience, enables it to provide advice and support for all your projects and developments. For more information, please do not hesitate to contact: [vetrotech.com](http://vetrotech.com)



CHECK  
VETROTECH  
SOLUTIONS GUIDE

# SMART TINTABLE GLAZING SAGEGLASS



As the global leader in smart window technology, SageGlass® helps create buildings that enhance occupant wellness.

SageGlass® electrochromic glass tints or clears automatically, optimizing both light and thermal comfort in a space, without the need for blinds or shades.

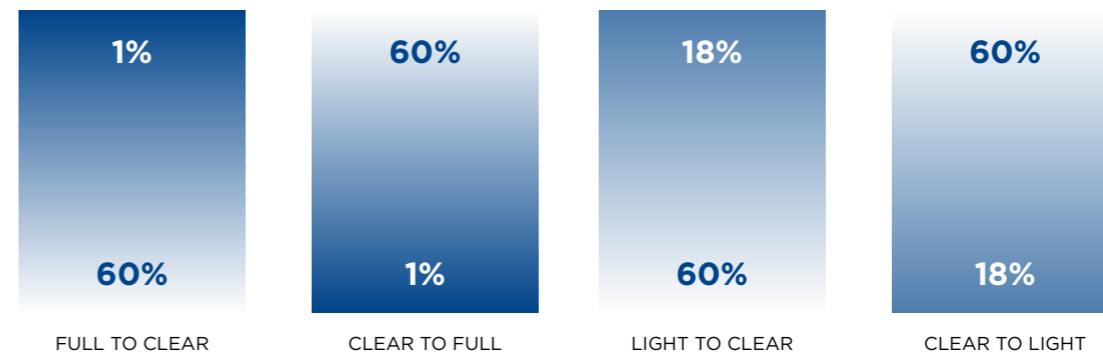
With SageGlass® smart windows, your buildings can feature a lot of windows, without compromising on energy efficiency and performance.

SageGlass® offers an array of smart glass solutions to suit different application needs



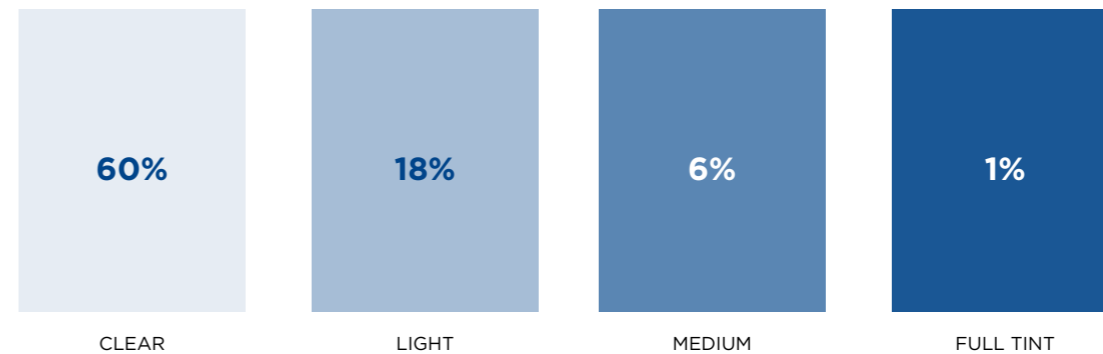
© InterCity-Schneider Electric - Grenoble (FR)

## HARMONY® STATES



SageGlass Harmony® can tint on a gradient, providing the perfect balance of daylight and glare control, and features four standard tint states.

## CLASSIC STATES (STANDARD STATES)



GET TO KNOW MORE  
ABOUT SAGEGLASS  
PRODUCTS AND OFFER



SCAN ME AND DISCOVER THE  
LATEST SAINT-GOBAIN GLASS  
FAÇADE REFERENCE BOOKS



[www.saint-gobain.hk](http://www.saint-gobain.hk)



[www.saint-gobain-glass.com](http://www.saint-gobain-glass.com)



[info.hk@saint-gobain.com](mailto:info.hk@saint-gobain.com)



[@saint-gobain-hk-mo](https://www.linkedin.com/company/saint-gobain-hk-mo)



**SAINT-GOBAIN  
HONG KONG & MACAU**

Room 1601-8, 16/F  
Tai Yau Building  
181 Johnston Road  
Wanchai, Hong Kong

Cover:  
New Cheung Kong Center II, HK  
Architect DLN Architects Limited  
Product(s) ST150, ET125

2025. 03 - This document is regularly updated; information in this document is subject to change. Please check with your local sales and specification team. The mentioned trademarks are registered trademarks of Saint-Gobain Glass or affiliates, part of Saint-Gobain group.